



كمنتيرين كصحتين
KEMENTERIAN KESIHATAN
MINISTRY OF HEALTH



NATIONAL CLINICAL MICROBIOLOGY REFERENCE LABORATORY

Introduction

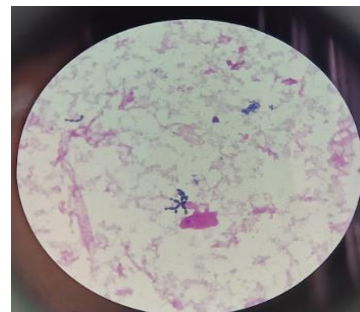
The main role of the National Clinical Microbiology Reference Laboratory is to identify the aetiologic agents of diseases caused by bacteria, fungi and parasites from a variety of clinical samples and provide antimicrobial susceptibility test results for clinically-significant isolates to the clinicians. Our laboratory offers services in the following disciplines of Clinical Microbiology; Bacteriology, Antimicrobial Susceptibility Testing, Mycology, Infection Control Screening and Serology. Apart from that, the laboratory also carries out Urinalysis and Stool microscopic examination, Fluid cell count, Urine pregnancy, Stool occult blood and Microfilaria parasite microscopy tests.

The National Clinical Microbiology Reference Laboratory works closely with Hospital Infection Control Unit in activities related to bacterial and fungal infections in all hospitals in Negara Brunei Darussalam. Our laboratory is also extensively committed to provide support for Antimicrobial Resistance Surveillance following Brunei Darussalam AMR National Action Plan and providing AMR data to WHO GLASS platform.

Our Services

BACTERIOLOGY

- Identification and antimicrobial susceptibility of:
 - Urogenital tract & associated specimens
 - Eye swab & associated specimens
 - Pus, Abscess, Wound, Cord, Tissue, Catheter and miscellaneous
 - Urine and Enteric bacterial pathogen
 - Respiratory samples (including ear swab)
 - Blood and cerebrospinal fluid samples



MYCOLOGY

- Fungal identification
- Fungal KOH

INFECTION CONTROL SCREENING

- *Acinetobacter baumannii* and *Methicillin-resistant Staphylococcus aureus* detection
- Environmental screening

SEROLOGY

- Anti-Streptolysin O Titre (ASOT)
- *Chlamydia trachomatis* antigen
- *Clostridium difficile* Toxin
- Microfilaria parasite detection

CONTACT US:

- 📍 Central State Laboratory, Raja Isteri Pengiran Anak Saleha Hospital, Commonwealth Drive, Bandar Seri Begawan Brunei Darussalam, BB3910
- ☎ +673 224 2424 EXT 6329/6330
- ✉ corp.comms@moh.gov.bn