

NATIONAL IMMUNOLOGY REFERENCE LABORATORY (NIRL)

Department of Laboratory Services

Our Services

National Immunology Reference Laboratory is a division of the Department of Laboratory Services which provides test specializing in autoimmunity and allergy. ELISA (Enzyme-Linked Immunosorbent Assay), IIFA (Indirect immunofluorescence assay), FEIA (Fluoro-enzyme-immunoassay), and LIA (Line-blot assay) are the methodology used to investigate for the detection of auto-antibodies and allergens. This will aid in diagnosing, monitoring and management of therapeutic responses. To provide the best quality services we rely on feedback and day-to-day communication with our client.

Laboratory Personnel

Head of Section: Saifuddien Haji Bagol

Deputy Head of Section: Amirah Batrisyia Zakirah Binti Haji Suhaimi

Staff:

Chief Scientific Officer

Scientific Officer

Medical Scientific Officer

Laboratory Assistants

Address

Central State Laboratory
Raja Isteri Pengiran Anak Saleha Hospital
Jalan Putera Al-Muhtadee Billah
Bandar Seri Begawan BA 1712

Contact Information

Email: immunoripas@gmail.com

Telephone: +673 2242424

Head of Section: Ext 6351

General Office: Ext 6348

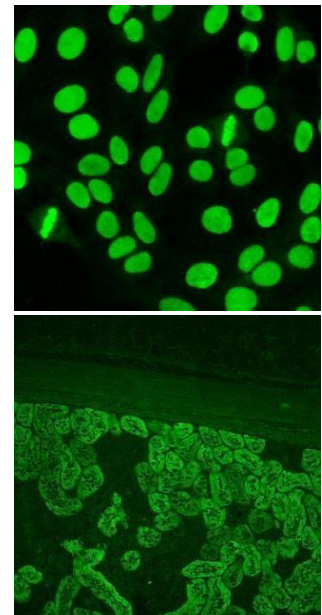
Laboratory: Ext 6349

Operating Hours

Monday to Thursday and Saturday

7.45am - 12.15pm and 1.30pm - 4:30 pm

Fasting month: 8.00am – 2.00pm



TEST CATALOGUE

Test Name	Anti-Cardiolipin Antibody IgG (Anti-ACG)
Specimen	Blood (red top, 6mL or SSTII gold top, 3.5-5mL)
Unacceptable	Haemolysed, Lipemic, Icteric
Method	Enzyme linked immunosorbent assay (ELISA)
Performed	Office hours only
TAT	20 days
Clinical usage	Investigation of inappropriate blood clot formation, to help determine the cause of recurrent miscarriage, or as part of an evaluation for antiphospholipid syndrome or sometimes other autoimmune diseases.

Test Name	Anti-Cardiolipin Antibody IgM (Anti-ACM)
Specimen	Blood (red top, 6mL or SSTII gold top, 3.5-5mL)
Unacceptable	Haemolysed, Lipemic, Icteric
Method	Enzyme linked immunosorbent assay (ELISA)
Performed	Office hours only
TAT	20 days
Clinical usage	Investigation of inappropriate blood clot formation, to help determine the cause of recurrent miscarriage, or as part of an evaluation for antiphospholipid syndrome or sometimes other autoimmune diseases.

Test Name	Anti-Cyclic Citrullinated Peptides Antibody (Anti-CCP)
Specimen	Blood (red top, 6mL or SSTII gold top, 3.5-5mL)
Unacceptable	Haemolysed, Lipemic, Icteric
Method	Enzyme linked immunosorbent assay (ELISA)
Performed	Office hours only
TAT	20 days
Clinical usage	Useful in the early diagnosis of rheumatoid arthritis (RA)

Test Name	<i>Crithidia luciliae</i> Immunofluorescence Test (CLIFT)
Specimen	Blood (red top, 6mL or SSTII gold top, 3.5-5mL)
Unacceptable	Haemolysed, Lipemic, Icteric
Method	Indirect immunofluorescence assay (IIFA)
Performed	Office hours only
TAT	10 days
Clinical usage	Useful in the diagnosis of systemic lupus erythematosus (SLE).

Test Name	Anti – double stranded Deoxyribonucleic Acid (dsDNA) Antibody (Anti-dsDNA)
Specimen	Blood (red top, 6mL or SSTII gold top, 3.5-5mL)
Unacceptable	Haemolysed, Lipemic, Icteric
Method	Enzyme linked immunosorbent assay (ELISA)
Performed	Office hours only
TAT	10 days
Clinical usage	Useful in the diagnosis of systemic lupus erythematosus (SLE).

Test Name	Extractable Nuclear Antigens (ENA) (Anti-SSA, Anti-SSB, Anti-Sm, Anti-RNP, Anti-Scl70 & Anti-Jo-1)
Specimen	Blood (red top, 6mL or SSTII gold top, 3.5-5mL)
Unacceptable	Haemolysed, Lipemic, Icteric
Method	Enzyme linked immunosorbent assay (ELISA)
Performed	Office hours only
TAT	10 days
Clinical usage	Aid in the diagnosis and treatment of Sjögren's syndrome, systemic lupus erythematosus, autoimmune connective tissue disorders, progressive systemic sclerosis, polymyositis and dermatomyositis.

Test Name	Anti-B2-Glycoprotein IgG (Anti-B2G)
Specimen	Blood (red top, 6mL or SSTII gold top, 3.5-5mL)
Unacceptable	Haemolysed, Lipemic, Icteric
Method	Enzyme linked immunosorbent assay (ELISA)
Performed	Office hours only
TAT	20 days
Clinical usage	To help investigate inappropriate blood clot formation; to help determine the cause of recurrent miscarriage; as part of an evaluation for antiphospholipid syndrome (APS)

Test Name	Anti-B2-Glycoprotein IgM (Anti-B2M)
Specimen	Blood (red top, 6mL or SSTII gold top, 3.5-5mL)
Unacceptable	Haemolysed, Lipemic, Icteric
Method	Enzyme linked immunosorbent assay (ELISA)
Performed	Office hours only
TAT	20 days
Clinical usage	To help investigate inappropriate blood clot formation; to help determine the cause of recurrent miscarriage; as part of an evaluation for antiphospholipid syndrome (APS)

Test Name	Anti-Mitochondrial Antibody (AMA)
Specimen	Blood (red top, 6mL or SSTII gold top, 3.5-5mL)
Unacceptable	Haemolysed, Lipemic, Icteric
Method	Indirect immunofluorescence assay (IIFA)
Performed	Office hours only
TAT	20 days
Clinical usage	Aids in the diagnosis of primary biliary cirrhosis. Low titres of AMA may be detected in other liver disorders which include chronic active hepatitis and cryptogenic cirrhosis

Test Name	Anti-Smooth Muscle Antibody (ASMA)
Specimen	Blood (red top, 6mL or SSTII gold top, 3.5-5mL)
Unacceptable	Haemolysed, Lipemic, Icteric
Method	Indirect immunofluorescence assay (IIFA)
Performed	Office hours only
TAT	20 days
Clinical usage	Useful in the diagnosis of autoimmune hepatitis type 1 (AIH-1)

Test Name	Anti-Parietal Cell Antibody (APCA)
Specimen	Blood (red top, 6mL or SSTII gold top, 3.5-5mL)
Unacceptable	Haemolysed, Lipemic, Icteric
Method	Indirect immunofluorescence assay (IIFA)
Performed	Office hours only
TAT	20 days
Clinical usage	APCA occurs in the serum of 90% of patients with autoimmune pernicious anaemia

Test Name	Anti-Liver Kidney Microsomal Antibody (LKM)
Specimen	Blood (red top, 6mL or SSTII gold top, 3.5-5mL)
Unacceptable	Haemolysed, Lipemic, Icteric
Method	Indirect immunofluorescence assay (IIFA)
Performed	Office hours only
TAT	20 days
Clinical usage	Used as a diagnostic marker for Autoimmune Hepatitis Type 2 (AIH-2).

Test Name	Anti-Neutrophil Cytoplasmic Antibody (ANCA)
Specimen	Blood (red top, 6mL or SSTII gold top, 3.5-5mL)
Unacceptable	Haemolysed, Lipemic, Icteric
Method	Indirect immunofluorescence assay (IIFA)
Performed	Office hours only
TAT	20 days
Clinical usage	Useful in the diagnosis of autoimmune vasculitis diseases such as Wegener's granulomatosis, microscopic polyngiitis, polyarteritis nodosa and Churg-Strauss Syndrome. NOTE: Not all specimens positive for P-ANCA are positive for Anti-MPO and not all specimens positive for C-ANCA are positive for Anti-PR3 antibody.

Test Name	Myeloperoxidase Antibody (Anti-MPO)
Specimen	Blood (red top, 6mL or SSTII gold top, 3.5-5mL)
Unacceptable	Haemolysed, Lipemic, Icteric
Method	Enzyme linked immunosorbent assay (ELISA)
Performed	Office hours only
TAT	20 days
Clinical usage	Useful in the diagnosis of autoimmune vasculitis diseases such as Wegener's granulomatosis, microscopic polyngiitis, polyarteritis nodosa and Churg-Strauss Syndrome. NOTE: Not all specimens positive for P-ANCA are positive for Anti-MPO and not all specimens positive for C-ANCA are positive for Anti-PR3 antibody.

Test Name	Proteinase 3 Antibody (Anti-PR3)
Specimen	Blood (red top, 6mL or SSTII gold top, 3.5-5mL)
Unacceptable	Haemolysed, Lipemic, Icteric
Method	Enzyme linked immunosorbent assay (ELISA)
Performed	Office hours only
TAT	20 days
Clinical usage	Useful in the diagnosis of autoimmune vasculitis diseases such as Wegener's granulomatosis, microscopic polyngiitis, polyarteritis nodosa and Churg-Strauss Syndrome. NOTE: Not all specimens positive for P-ANCA are positive for Anti-MPO and not all specimens positive for C-ANCA are positive for Anti-PR3 antibody.

Test Name	Anti-Nuclear Antibody (ANA)
Specimen	Blood (red top, 6mL or SSTII gold top, 3.5-5mL)
Unacceptable	Haemolysed, Lipemic, Icteric
Method	Indirect immunofluorescence assay (IIFA)
Performed	Office hours only
TAT	10 days
Clinical usage	A positive ANA result usually occurs in patients with autoimmune disorders such as SLE, mixed connective tissue disease (MCTD), RA, Sjogren's syndrome (SS), and progressive systemic sclerosis (PSS). A negative result does not exclude presence of autoimmune disease.

Test Name	Anti-Thyroglobulin Antibody (Anti-TG)
Specimen	Blood (red top, 6mL or SSTII gold top, 3.5-5mL)
Unacceptable	Haemolysed, Lipemic, Icteric
Method	Enzyme linked immunosorbent assay (ELISA)
Performed	Office hours only
TAT	20 days
Clinical usage	Useful in the diagnosis of Grave's disease, Hashimoto's thyroiditis

Test Name	Anti-Thyroid-Peroxidase Antibody (Anti-TPO)
Specimen	Blood (red top, 6mL or SSTII gold top, 3.5-5mL)
Unacceptable	Haemolysed, Lipemic, Icteric
Method	Enzyme linked immunosorbent assay (ELISA)
Performed	Office hours only
TAT	20 days
Clinical usage	Useful in the diagnosis of Grave's disease, Hashimoto's thyroiditis

Test Name	Anti-N-methyl-D-aspartate-receptor (NMDAR) Antibody (Anti-NMDAR)
Specimen	Blood (red top, 6mL or SSTII gold top, 3.5-5mL) CSF (Sterile bottle)
Unacceptable	Haemolysed, Lipemic, Icteric
Method	Indirect immunofluorescence assay (IIFA)
Performed	Office hours only
TAT	10 days
Clinical usage	Aids in the diagnosis and treatment of autoimmune encephalitis

Test Name	Anti-Thyroid Stimulating Hormone Receptors Antibody (Anti-TSHR)
Specimen	Blood (red top, 6mL or SSTII gold top, 3.5-5mL)
Unacceptable	Haemolysed, Lipemic, Icteric
Method	Enzyme linked immunosorbent assay (ELISA)
Performed	Office hours only
TAT	20 days
Clinical usage	Detection or exclusion and management of the treatment of Grave's disease

Test Name	Total Immunoglobulin E (tIgE)
Specimen	Blood (red top, 6mL or SSTII gold top, 3.5-5mL)
Unacceptable	Haemolysed, Lipemic, Icteric
Method	Fluoro-enzyme-immunoassay (FEIA)
Performed	Office hours only
TAT	20 days
Clinical usage	Levels increased in atopic diseases, parasitic diseases and IgE myeloma.

Test Name	Allergy Panel - Seeds, Legumes & Nuts												
Specimen	Blood (red top, 6mL or SSTII gold top, 3.5-5mL)												
Unacceptable	Haemolysed, Lipemic, Icteric												
Method	Fluoro-enzyme-immunoassay (FEIA)												
Performed	Office hours only												
TAT	20 days												
Clinical usage	<p>Aids in the diagnosis of IgE mediate allergic disorders.</p> <p>The ordering and interpretation of specific IgE tests should be made with careful clinical correlation. They are useful for confirming the allergen specificity in patients with clinically documented allergic disease. They may be less effective when used for screening.</p> <table border="1" data-bbox="469 1518 1270 1783"> <thead> <tr> <th colspan="2">Panel Tests</th> </tr> </thead> <tbody> <tr> <td>SIGEF10 - Sesame seed</td> <td>SIGEF202 - Cashew nut</td> </tr> <tr> <td>SIGEF13 - Peanut</td> <td>SIGEF203 - Pistachio</td> </tr> <tr> <td>SIGEF14 - Soya bean</td> <td>SIGEF4 - Wheat</td> </tr> <tr> <td>SIGEF17 - Hazel nut</td> <td>SIGEF7 - Oat</td> </tr> <tr> <td>SIGEF20 - Almond</td> <td>SIGEF79 - Gluten</td> </tr> </tbody> </table>	Panel Tests		SIGEF10 - Sesame seed	SIGEF202 - Cashew nut	SIGEF13 - Peanut	SIGEF203 - Pistachio	SIGEF14 - Soya bean	SIGEF4 - Wheat	SIGEF17 - Hazel nut	SIGEF7 - Oat	SIGEF20 - Almond	SIGEF79 - Gluten
Panel Tests													
SIGEF10 - Sesame seed	SIGEF202 - Cashew nut												
SIGEF13 - Peanut	SIGEF203 - Pistachio												
SIGEF14 - Soya bean	SIGEF4 - Wheat												
SIGEF17 - Hazel nut	SIGEF7 - Oat												
SIGEF20 - Almond	SIGEF79 - Gluten												

Test Name	Allergy Panel - Eczema												
Specimen	Blood (red top, 6mL or SSTII gold top, 3.5-5mL)												
Unacceptable	Haemolysed, Lipemic, Icteric												
Method	Fluoro-enzyme-immunoassay (FEIA)												
Performed	Office hours only												
TAT	20 days												
Clinical usage	<p>Aids in the diagnosis of IgE mediate allergic disorders.</p> <p>The ordering and interpretation of specific IgE tests should be made with careful clinical correlation. They are useful for confirming the allergen specificity in patients with clinically documented allergic disease. They may be less effective when used for screening.</p> <table border="1" data-bbox="470 705 1268 963"> <thead> <tr> <th colspan="2">Panel Tests</th> </tr> </thead> <tbody> <tr> <td>SIGEF13 - Peanut</td> <td>SIGEF4 - Wheat</td> </tr> <tr> <td>SIGEF2 - Milk</td> <td>SIGED1 - D. Pteronyssinus</td> </tr> <tr> <td>SIGEF24 - Shrimp</td> <td>SIGED201 - Blomia Tropicalis</td> </tr> <tr> <td>SIGEF245 - Egg</td> <td>SIGEE1 - Cat dander</td> </tr> <tr> <td>SIGEF3 - Fish</td> <td></td> </tr> </tbody> </table>	Panel Tests		SIGEF13 - Peanut	SIGEF4 - Wheat	SIGEF2 - Milk	SIGED1 - D. Pteronyssinus	SIGEF24 - Shrimp	SIGED201 - Blomia Tropicalis	SIGEF245 - Egg	SIGEE1 - Cat dander	SIGEF3 - Fish	
Panel Tests													
SIGEF13 - Peanut	SIGEF4 - Wheat												
SIGEF2 - Milk	SIGED1 - D. Pteronyssinus												
SIGEF24 - Shrimp	SIGED201 - Blomia Tropicalis												
SIGEF245 - Egg	SIGEE1 - Cat dander												
SIGEF3 - Fish													

Test Name	Allergy Panel - Wheeze/Arthritis (Paediatric)												
Specimen	Blood (red top, 6mL or SSTII gold top, 3.5-5mL)												
Unacceptable	Haemolysed, Lipemic, Icteric												
Method	Fluoro-enzyme-immunoassay (FEIA)												
Performed	Office hours only												
TAT	20 days												
Clinical usage	<p>Aids in the diagnosis of IgE mediate allergic disorders.</p> <p>The ordering and interpretation of specific IgE tests should be made with careful clinical correlation. They are useful for confirming the allergen specificity in patients with clinically documented allergic disease. They may be less effective when used for screening.</p> <table border="1" data-bbox="470 1556 1268 1814"> <thead> <tr> <th colspan="2">Panel Tests</th> </tr> </thead> <tbody> <tr> <td>SIGEF13 - Peanut</td> <td>SIGEF4 - Wheat</td> </tr> <tr> <td>SIGEF2 - Milk</td> <td>SIGED1 - D. Pteronyssinus</td> </tr> <tr> <td>SIGEF24 - Shrimp</td> <td>SIGED201 - Blomia Tropicalis</td> </tr> <tr> <td>SIGEF245 - Egg</td> <td>SIGEE1 - Cat dander</td> </tr> <tr> <td>SIGEF3 - Fish</td> <td>SIGEG2 - Bermuda grass</td> </tr> </tbody> </table>	Panel Tests		SIGEF13 - Peanut	SIGEF4 - Wheat	SIGEF2 - Milk	SIGED1 - D. Pteronyssinus	SIGEF24 - Shrimp	SIGED201 - Blomia Tropicalis	SIGEF245 - Egg	SIGEE1 - Cat dander	SIGEF3 - Fish	SIGEG2 - Bermuda grass
Panel Tests													
SIGEF13 - Peanut	SIGEF4 - Wheat												
SIGEF2 - Milk	SIGED1 - D. Pteronyssinus												
SIGEF24 - Shrimp	SIGED201 - Blomia Tropicalis												
SIGEF245 - Egg	SIGEE1 - Cat dander												
SIGEF3 - Fish	SIGEG2 - Bermuda grass												

Test Name	Allergy Panel - Wheeze/Arthritis (Adult)												
Specimen	Blood (red top, 6mL or SSTII gold top, 3.5-5mL)												
Unacceptable	Haemolysed, Lipemic, Icteric												
Method	Fluoro-enzyme-immunoassay (FEIA)												
Performed	Office hours only												
TAT	20 days												
Clinical usage	<p>Aids in the diagnosis of IgE mediate allergic disorders.</p> <p>The ordering and interpretation of specific IgE tests should be made with careful clinical correlation. They are useful for confirming the allergen specificity in patients with clinically documented allergic disease. They may be less effective when used for screening.</p> <table border="1" data-bbox="470 705 1268 963"> <thead> <tr> <th colspan="2">Panel Tests</th> </tr> </thead> <tbody> <tr> <td>SIGEF23 - Crab</td> <td>SIGED201 - Blomia Tropicalis</td> </tr> <tr> <td>SIGEF24 - Shrimp</td> <td>SIGED1 - D. Pteronyssinus</td> </tr> <tr> <td>SIGEF258 - Squid</td> <td>SIGEG2 - Bermuda grass</td> </tr> <tr> <td>SIGEF3 - Fish</td> <td>SIGET19 - Acacia</td> </tr> <tr> <td>SIGEE1 - Cat dander</td> <td></td> </tr> </tbody> </table>	Panel Tests		SIGEF23 - Crab	SIGED201 - Blomia Tropicalis	SIGEF24 - Shrimp	SIGED1 - D. Pteronyssinus	SIGEF258 - Squid	SIGEG2 - Bermuda grass	SIGEF3 - Fish	SIGET19 - Acacia	SIGEE1 - Cat dander	
Panel Tests													
SIGEF23 - Crab	SIGED201 - Blomia Tropicalis												
SIGEF24 - Shrimp	SIGED1 - D. Pteronyssinus												
SIGEF258 - Squid	SIGEG2 - Bermuda grass												
SIGEF3 - Fish	SIGET19 - Acacia												
SIGEE1 - Cat dander													

Test Name	Allergy Panel - Seafood								
Specimen	Blood (red top, 6mL or SSTII gold top, 3.5-5mL)								
Unacceptable	Haemolysed, Lipemic, Icteric								
Method	Fluoro-enzyme-immunoassay (FEIA)								
Performed	Office hours only								
TAT	20 days								
Clinical usage	<p>Aids in the diagnosis of IgE mediate allergic disorders.</p> <p>The ordering and interpretation of specific IgE tests should be made with careful clinical correlation. They are useful for confirming the allergen specificity in patients with clinically documented allergic disease. They may be less effective when used for screening.</p> <table border="1" data-bbox="470 1556 1268 1724"> <thead> <tr> <th colspan="2">Panel Tests</th> </tr> </thead> <tbody> <tr> <td>SIGEF206 - Mackerel</td> <td>SIGEF40 - Tuna</td> </tr> <tr> <td>SIGEF3 - Fish</td> <td>SIGEF41 - Salmon</td> </tr> <tr> <td>SIGEF313 - Anchovy</td> <td></td> </tr> </tbody> </table>	Panel Tests		SIGEF206 - Mackerel	SIGEF40 - Tuna	SIGEF3 - Fish	SIGEF41 - Salmon	SIGEF313 - Anchovy	
Panel Tests									
SIGEF206 - Mackerel	SIGEF40 - Tuna								
SIGEF3 - Fish	SIGEF41 - Salmon								
SIGEF313 - Anchovy									

Test Name	Allergy Panel - Shellfish								
Specimen	Blood (red top, 6mL or SSTII gold top, 3.5-5mL)								
Unacceptable	Haemolysed, Lipemic, Icteric								
Method	Fluoro-enzyme-immunoassay (FEIA)								
Performed	Office hours only								
TAT	20 days								
Clinical usage	<p>Aids in the diagnosis of IgE mediate allergic disorders.</p> <p>The ordering and interpretation of specific IgE tests should be made with careful clinical correlation. They are useful for confirming the allergen specificity in patients with clinically documented allergic disease. They may be less effective when used for screening.</p> <table border="1" data-bbox="470 705 1268 884"> <thead> <tr> <th colspan="2">Panel Tests</th> </tr> </thead> <tbody> <tr> <td>SIGEF207 - Clam</td> <td>SIGEF258 - Squid</td> </tr> <tr> <td>SIGEF23 - Crab</td> <td>SIGEF290 - Oyster</td> </tr> <tr> <td>SIGEF24 - Shrimp</td> <td></td> </tr> </tbody> </table>	Panel Tests		SIGEF207 - Clam	SIGEF258 - Squid	SIGEF23 - Crab	SIGEF290 - Oyster	SIGEF24 - Shrimp	
Panel Tests									
SIGEF207 - Clam	SIGEF258 - Squid								
SIGEF23 - Crab	SIGEF290 - Oyster								
SIGEF24 - Shrimp									

Test Name	Allergy Panel - Inhalants										
Specimen	Blood (red top, 6mL or SSTII gold top, 3.5-5mL)										
Unacceptable	Haemolysed, Lipemic, Icteric										
Method	Fluoro-enzyme-immunoassay (FEIA)										
Performed	Office hours only										
TAT	20 days										
Clinical usage	<p>Aids in the diagnosis of IgE mediate allergic disorders.</p> <p>The ordering and interpretation of specific IgE tests should be made with careful clinical correlation. They are useful for confirming the allergen specificity in patients with clinically documented allergic disease. They may be less effective when used for screening.</p> <table border="1" data-bbox="470 1456 1268 1668"> <thead> <tr> <th colspan="2">Panel Tests</th> </tr> </thead> <tbody> <tr> <td>SIGED1 - D. Pteronyssinus</td> <td>SIGEE1 - Cat dander</td> </tr> <tr> <td>SIGED201 - Blomia Tropicalis</td> <td>SIGEM3 - Aspergillus Fumigatus</td> </tr> <tr> <td>SIGEG17 - Bahia grass</td> <td>SIGEI206 - Cockroach, American</td> </tr> <tr> <td>SIGEG2 - Bermuda grass</td> <td>SIGET3 - Common silver Birch</td> </tr> </tbody> </table>	Panel Tests		SIGED1 - D. Pteronyssinus	SIGEE1 - Cat dander	SIGED201 - Blomia Tropicalis	SIGEM3 - Aspergillus Fumigatus	SIGEG17 - Bahia grass	SIGEI206 - Cockroach, American	SIGEG2 - Bermuda grass	SIGET3 - Common silver Birch
Panel Tests											
SIGED1 - D. Pteronyssinus	SIGEE1 - Cat dander										
SIGED201 - Blomia Tropicalis	SIGEM3 - Aspergillus Fumigatus										
SIGEG17 - Bahia grass	SIGEI206 - Cockroach, American										
SIGEG2 - Bermuda grass	SIGET3 - Common silver Birch										

Test Name	Allergy Panel - Food								
Specimen	Blood (red top, 6mL or SSTII gold top, 3.5-5mL)								
Unacceptable	Haemolysed, Lipemic, Icteric								
Method	Fluoro-enzyme-immunoassay (FEIA)								
Performed	Office hours only								
TAT	20 days								
Clinical usage	<p>Aids in the diagnosis of IgE mediate allergic disorders.</p> <p>The ordering and interpretation of specific IgE tests should be made with careful clinical correlation. They are useful for confirming the allergen specificity in patients with clinically documented allergic disease. They may be less effective when used for screening.</p> <table border="1" data-bbox="470 705 1268 884"> <thead> <tr> <th colspan="2">Panel Tests</th> </tr> </thead> <tbody> <tr> <td>SIGEF14 - Soya bean</td> <td>SIGEF27 - Beef</td> </tr> <tr> <td>SIGEF2 - Milk</td> <td>SIGEF81 - Cheese, Cheddar type</td> </tr> <tr> <td>SIGEF245 - Egg</td> <td>SIGEF83 - Chicken</td> </tr> </tbody> </table>	Panel Tests		SIGEF14 - Soya bean	SIGEF27 - Beef	SIGEF2 - Milk	SIGEF81 - Cheese, Cheddar type	SIGEF245 - Egg	SIGEF83 - Chicken
Panel Tests									
SIGEF14 - Soya bean	SIGEF27 - Beef								
SIGEF2 - Milk	SIGEF81 - Cheese, Cheddar type								
SIGEF245 - Egg	SIGEF83 - Chicken								

Test Name	Allergy Panel - Eczema & Wheeze/Arthritis																
Specimen	Blood (red top, 6mL or SSTII gold top, 3.5-5mL)																
Unacceptable	Haemolysed, Lipemic, Icteric																
Method	Fluoro-enzyme-immunoassay (FEIA)																
Performed	Office hours only																
TAT	20 days																
Clinical usage	<p>Aids in the diagnosis of IgE mediate allergic disorders.</p> <p>The ordering and interpretation of specific IgE tests should be made with careful clinical correlation. They are useful for confirming the allergen specificity in patients with clinically documented allergic disease. They may be less effective when used for screening.</p> <table border="1" data-bbox="470 1456 1268 1803"> <thead> <tr> <th colspan="2">Panel Tests</th> </tr> </thead> <tbody> <tr> <td>SIGEF13 - Peanut</td> <td>SIGEF4 - Wheat</td> </tr> <tr> <td>SIGEF2 - Milk</td> <td>SIGEE1 - Cat dander</td> </tr> <tr> <td>SIGEF23 - Crab</td> <td>SIGED1 - D. Pteronyssinus</td> </tr> <tr> <td>SIGEF24 - Shrimp</td> <td>SIGED201 - Blomia Tropicalis</td> </tr> <tr> <td>SIGEF245 - Egg</td> <td>SIGEG2 - Bermuda grass</td> </tr> <tr> <td>SIGEF258 - Squid</td> <td>SIGET19 - Acacia</td> </tr> <tr> <td>SIGEF3 - Fish</td> <td></td> </tr> </tbody> </table>	Panel Tests		SIGEF13 - Peanut	SIGEF4 - Wheat	SIGEF2 - Milk	SIGEE1 - Cat dander	SIGEF23 - Crab	SIGED1 - D. Pteronyssinus	SIGEF24 - Shrimp	SIGED201 - Blomia Tropicalis	SIGEF245 - Egg	SIGEG2 - Bermuda grass	SIGEF258 - Squid	SIGET19 - Acacia	SIGEF3 - Fish	
Panel Tests																	
SIGEF13 - Peanut	SIGEF4 - Wheat																
SIGEF2 - Milk	SIGEE1 - Cat dander																
SIGEF23 - Crab	SIGED1 - D. Pteronyssinus																
SIGEF24 - Shrimp	SIGED201 - Blomia Tropicalis																
SIGEF245 - Egg	SIGEG2 - Bermuda grass																
SIGEF258 - Squid	SIGET19 - Acacia																
SIGEF3 - Fish																	

Test Name	Allergy Panel - Eczema & Inhalants																
Specimen	Blood (red top, 6mL or SSTII gold top, 3.5-5mL)																
Unacceptable	Haemolysed, Lipemic, Icteric																
Method	Fluoro-enzyme-immunoassay (FEIA)																
Performed	Office hours only																
TAT	20 days																
Clinical usage	<p>Aids in the diagnosis of IgE mediate allergic disorders.</p> <p>The ordering and interpretation of specific IgE tests should be made with careful clinical correlation. They are useful for confirming the allergen specificity in patients with clinically documented allergic disease. They may be less effective when used for screening.</p> <table border="1" data-bbox="469 705 1332 1052"> <thead> <tr> <th colspan="2">Panel Tests</th> </tr> </thead> <tbody> <tr> <td>SIGEF13 - Peanut</td> <td>SIGEF4 - Wheat</td> </tr> <tr> <td>SIGEF2 - Milk</td> <td>SIGED1 - D. Pteronyssinus</td> </tr> <tr> <td>SIGEF24 - Shrimp</td> <td>SIGED201 - Blomia Tropicalis</td> </tr> <tr> <td>SIGEF245 - Egg</td> <td>SIGEE1 - Cat dander</td> </tr> <tr> <td>SIGEF3 - Fish</td> <td>SIGEG17 - Bahia grass</td> </tr> <tr> <td>SIGEM3 - Aspergillus Fumigatus</td> <td>SIGEG2 - Bermuda grass</td> </tr> <tr> <td>SIGEI206 - Cockroach, American</td> <td>SIGET3 - Common silver Birch</td> </tr> </tbody> </table>	Panel Tests		SIGEF13 - Peanut	SIGEF4 - Wheat	SIGEF2 - Milk	SIGED1 - D. Pteronyssinus	SIGEF24 - Shrimp	SIGED201 - Blomia Tropicalis	SIGEF245 - Egg	SIGEE1 - Cat dander	SIGEF3 - Fish	SIGEG17 - Bahia grass	SIGEM3 - Aspergillus Fumigatus	SIGEG2 - Bermuda grass	SIGEI206 - Cockroach, American	SIGET3 - Common silver Birch
Panel Tests																	
SIGEF13 - Peanut	SIGEF4 - Wheat																
SIGEF2 - Milk	SIGED1 - D. Pteronyssinus																
SIGEF24 - Shrimp	SIGED201 - Blomia Tropicalis																
SIGEF245 - Egg	SIGEE1 - Cat dander																
SIGEF3 - Fish	SIGEG17 - Bahia grass																
SIGEM3 - Aspergillus Fumigatus	SIGEG2 - Bermuda grass																
SIGEI206 - Cockroach, American	SIGET3 - Common silver Birch																

Test Name	ANA Profile 3 plus DFS70 (IgG) ANABLOT																																			
Specimen	Blood (red top, 6mL or SSTII gold top, 3.5-5mL)																																			
Unacceptable	Haemolysed, Lipemic, Icteric																																			
Method	Lineblot Assay (LIA)																																			
Performed	Office hours only																																			
TAT	10 days																																			
Clinical usage	<table border="1"> <thead> <tr> <th>Antigen</th> <th>Associated Diseases</th> </tr> </thead> <tbody> <tr> <td>RNP/Sm</td> <td>MCTD, SLE, Systemic Sclerosis, Polymyositis, Dermatomyositis</td> </tr> <tr> <td>Sm</td> <td>SLE</td> </tr> <tr> <td>SS-A native (60 kDa)</td> <td>Sjögren's syndrome, SLE, Neonatal lupus erythematosus, Primary biliary cirrhosis</td> </tr> <tr> <td>Ro-52 recombinant</td> <td>Sjögren's syndrome, SLE, Neonatal lupus erythematosus, Systemic sclerosis, Myositis, Polymyositis, Dermatomyositis, MCTD, Primary biliary cirrhosis, RA, Autoimmune hepatitis, Viral hepatitis. Note: Not disease specific and only considered as positive if accompanied by another positive marker.</td> </tr> <tr> <td>SS-B</td> <td>Sjögren's syndrome, SLE, Neonatal lupus erythematosus</td> </tr> <tr> <td>Sci-70</td> <td>Systemic sclerosis (diffuse and limited form)</td> </tr> <tr> <td>PM-Scl</td> <td>Systemic sclerosis, Polymyositis, Overlap syndrome</td> </tr> <tr> <td>Jo-1</td> <td>Polymyositis, Dermatomyositis</td> </tr> <tr> <td>Centromere B</td> <td>Systemic sclerosis (diffuse and limited form), Primary biliary cirrhosis</td> </tr> <tr> <td>PCNA</td> <td>SLE</td> </tr> <tr> <td>dsDNA</td> <td>SLE</td> </tr> <tr> <td>Nucleosome</td> <td>SLE</td> </tr> <tr> <td>Histones</td> <td>Drug-induced lupus erythematosus, SLE, RA</td> </tr> <tr> <td>Ribosomal-P-protein (RIB)</td> <td>SLE</td> </tr> <tr> <td>AMA-M2</td> <td>Primary biliary liver cirrhosis</td> </tr> <tr> <td>DFS70</td> <td>Atopic dermatitis, asthma, Vogt-Harada syndrome and interstitial cystitis, as well as rheumatic disease, healthy blood donors</td> </tr> </tbody> </table>		Antigen	Associated Diseases	RNP/Sm	MCTD, SLE, Systemic Sclerosis, Polymyositis, Dermatomyositis	Sm	SLE	SS-A native (60 kDa)	Sjögren's syndrome, SLE, Neonatal lupus erythematosus, Primary biliary cirrhosis	Ro-52 recombinant	Sjögren's syndrome, SLE, Neonatal lupus erythematosus, Systemic sclerosis, Myositis, Polymyositis, Dermatomyositis, MCTD, Primary biliary cirrhosis, RA, Autoimmune hepatitis, Viral hepatitis. Note: Not disease specific and only considered as positive if accompanied by another positive marker.	SS-B	Sjögren's syndrome, SLE, Neonatal lupus erythematosus	Sci-70	Systemic sclerosis (diffuse and limited form)	PM-Scl	Systemic sclerosis, Polymyositis, Overlap syndrome	Jo-1	Polymyositis, Dermatomyositis	Centromere B	Systemic sclerosis (diffuse and limited form), Primary biliary cirrhosis	PCNA	SLE	dsDNA	SLE	Nucleosome	SLE	Histones	Drug-induced lupus erythematosus, SLE, RA	Ribosomal-P-protein (RIB)	SLE	AMA-M2	Primary biliary liver cirrhosis	DFS70	Atopic dermatitis, asthma, Vogt-Harada syndrome and interstitial cystitis, as well as rheumatic disease, healthy blood donors
Antigen	Associated Diseases																																			
RNP/Sm	MCTD, SLE, Systemic Sclerosis, Polymyositis, Dermatomyositis																																			
Sm	SLE																																			
SS-A native (60 kDa)	Sjögren's syndrome, SLE, Neonatal lupus erythematosus, Primary biliary cirrhosis																																			
Ro-52 recombinant	Sjögren's syndrome, SLE, Neonatal lupus erythematosus, Systemic sclerosis, Myositis, Polymyositis, Dermatomyositis, MCTD, Primary biliary cirrhosis, RA, Autoimmune hepatitis, Viral hepatitis. Note: Not disease specific and only considered as positive if accompanied by another positive marker.																																			
SS-B	Sjögren's syndrome, SLE, Neonatal lupus erythematosus																																			
Sci-70	Systemic sclerosis (diffuse and limited form)																																			
PM-Scl	Systemic sclerosis, Polymyositis, Overlap syndrome																																			
Jo-1	Polymyositis, Dermatomyositis																																			
Centromere B	Systemic sclerosis (diffuse and limited form), Primary biliary cirrhosis																																			
PCNA	SLE																																			
dsDNA	SLE																																			
Nucleosome	SLE																																			
Histones	Drug-induced lupus erythematosus, SLE, RA																																			
Ribosomal-P-protein (RIB)	SLE																																			
AMA-M2	Primary biliary liver cirrhosis																																			
DFS70	Atopic dermatitis, asthma, Vogt-Harada syndrome and interstitial cystitis, as well as rheumatic disease, healthy blood donors																																			

Test Name	Anti-MPO, -PR3 and -GBM (IgG) (Anti-GBM)									
Specimen	Blood (red top, 6mL or SSTII gold top, 3.5-5mL)									
Unacceptable	Haemolysed, Lipemic, Icteric									
Method	Lineblot Assay (LIA)									
Performed	Office hours only									
TAT	10 days									
Clinical usage	<table border="1"> <thead> <tr> <th>Antigen</th> <th>Associated Diseases</th> </tr> </thead> <tbody> <tr> <td>Myeloperoxidase (MPO)</td> <td>Eosinophilic granulomatosis with polyangiitis (EGPA) ; Microscopic polyangiitis (MPA)</td> </tr> <tr> <td>Proteinase 3 (PR3)</td> <td>Granulomatosis with polyangiitis (Wegener's) (GPA) ; Microscopic polyangiitis (MPA)</td> </tr> <tr> <td>Glomerular basement membrane (GBM)</td> <td>Goodpasture's syndrome</td> </tr> </tbody> </table>		Antigen	Associated Diseases	Myeloperoxidase (MPO)	Eosinophilic granulomatosis with polyangiitis (EGPA) ; Microscopic polyangiitis (MPA)	Proteinase 3 (PR3)	Granulomatosis with polyangiitis (Wegener's) (GPA) ; Microscopic polyangiitis (MPA)	Glomerular basement membrane (GBM)	Goodpasture's syndrome
Antigen	Associated Diseases									
Myeloperoxidase (MPO)	Eosinophilic granulomatosis with polyangiitis (EGPA) ; Microscopic polyangiitis (MPA)									
Proteinase 3 (PR3)	Granulomatosis with polyangiitis (Wegener's) (GPA) ; Microscopic polyangiitis (MPA)									
Glomerular basement membrane (GBM)	Goodpasture's syndrome									

Test Name	Autoimmune Liver Disease (IgG) (LIVERBLOT)																					
Specimen	Blood (red top, 6mL or SSTII gold top, 3.5-5mL)																					
Unacceptable	Haemolysed, Lipemic, Icteric																					
Method	Lineblot Assay (LIA)																					
Performed	Office hours only																					
TAT	10 days																					
Clinical usage	<table border="1"> <thead> <tr> <th>Antigen</th> <th>Associated Diseases</th> </tr> </thead> <tbody> <tr> <td>AMA-M2</td> <td>Primary Biliary Cirrhosis (PBC)</td> </tr> <tr> <td>M2-3E (BPO)</td> <td>Primary Biliary Cirrhosis (PBC)</td> </tr> <tr> <td>Sp100</td> <td>Primary Biliary Cirrhosis (PBC)</td> </tr> <tr> <td>PML</td> <td>Primary Biliary Cirrhosis (PBC)</td> </tr> <tr> <td>gp210</td> <td>Primary Biliary Cirrhosis (PBC)</td> </tr> <tr> <td>LKM-1</td> <td>Type 2 Autoimmune Hepatitis (AIH)</td> </tr> <tr> <td>LC-1</td> <td>Type 2 Autoimmune Hepatitis (AIH)</td> </tr> <tr> <td>SLA/LP</td> <td>Type 1 or Type 3 Autoimmune Hepatitis (AIH)</td> </tr> <tr> <td>Ro-52</td> <td>Sjögren's syndrome, SLE, Neonatal lupus erythematosus, Systemic sclerosis, Myositis, Polymyositis, Dermatomyositis, MCTD, Primary Biliary Cirrhosis (PBC), RA, Autoimmune hepatitis, Viral hepatitis. Note: Not disease specific and only considered as positive if accompanied by another positive marker.</td> </tr> </tbody> </table>		Antigen	Associated Diseases	AMA-M2	Primary Biliary Cirrhosis (PBC)	M2-3E (BPO)	Primary Biliary Cirrhosis (PBC)	Sp100	Primary Biliary Cirrhosis (PBC)	PML	Primary Biliary Cirrhosis (PBC)	gp210	Primary Biliary Cirrhosis (PBC)	LKM-1	Type 2 Autoimmune Hepatitis (AIH)	LC-1	Type 2 Autoimmune Hepatitis (AIH)	SLA/LP	Type 1 or Type 3 Autoimmune Hepatitis (AIH)	Ro-52	Sjögren's syndrome, SLE, Neonatal lupus erythematosus, Systemic sclerosis, Myositis, Polymyositis, Dermatomyositis, MCTD, Primary Biliary Cirrhosis (PBC), RA, Autoimmune hepatitis, Viral hepatitis. Note: Not disease specific and only considered as positive if accompanied by another positive marker.
Antigen	Associated Diseases																					
AMA-M2	Primary Biliary Cirrhosis (PBC)																					
M2-3E (BPO)	Primary Biliary Cirrhosis (PBC)																					
Sp100	Primary Biliary Cirrhosis (PBC)																					
PML	Primary Biliary Cirrhosis (PBC)																					
gp210	Primary Biliary Cirrhosis (PBC)																					
LKM-1	Type 2 Autoimmune Hepatitis (AIH)																					
LC-1	Type 2 Autoimmune Hepatitis (AIH)																					
SLA/LP	Type 1 or Type 3 Autoimmune Hepatitis (AIH)																					
Ro-52	Sjögren's syndrome, SLE, Neonatal lupus erythematosus, Systemic sclerosis, Myositis, Polymyositis, Dermatomyositis, MCTD, Primary Biliary Cirrhosis (PBC), RA, Autoimmune hepatitis, Viral hepatitis. Note: Not disease specific and only considered as positive if accompanied by another positive marker.																					

Test Name	Autoimmune Inflammatory Myopathies 16 Ag (IgG) (MPBLOT)																																			
Specimen	Blood (red top, 6mL or SSTII gold top, 3.5-5mL)																																			
Unacceptable	Haemolysed, Lipemic, Icteric																																			
Method	Lineblot Assay (LIA)																																			
Performed	Office hours only																																			
TAT	10 days																																			
Clinical usage	<table border="1"> <thead> <tr> <th>Antigen</th> <th>Associated Diseases and Autoantibody Prevalence</th> </tr> </thead> <tbody> <tr> <td>Mi-2α</td> <td>15-30% in DM patients ; 8-12% in idiopathic myositis patients</td> </tr> <tr> <td>Mi-2β</td> <td>15-30% in DM patients ; 8-12% in idiopathic myositis patients</td> </tr> <tr> <td>TIF1g</td> <td>15% in DM patients</td> </tr> <tr> <td>MDA5</td> <td>13-26% in DM patients ; 95% in clinically amyopathic DM patients</td> </tr> <tr> <td>NXP2</td> <td>18-25% in juvenile PM/DM patients</td> </tr> <tr> <td>SAE1</td> <td>8% in DM patients</td> </tr> <tr> <td>Ku</td> <td>Myositis associated. 40% in myositis or systemic sclerosis</td> </tr> <tr> <td>PM-Sc100</td> <td>Myositis associated. 50-70% in overlap PM/DM/systemic sclerosis patients</td> </tr> <tr> <td>PM-Sc175</td> <td>Myositis associated. 50-70% in overlap PM/DM/systemic sclerosis patients</td> </tr> <tr> <td>Jo-1</td> <td>25-55% in PM patients</td> </tr> <tr> <td>SRP</td> <td>5% in PM patients</td> </tr> <tr> <td>PL-7</td> <td>3-6% in myositis patients</td> </tr> <tr> <td>PL-12</td> <td>3% in myositis patients</td> </tr> <tr> <td>EJ</td> <td>1-3% in PM patients</td> </tr> <tr> <td>OJ</td> <td>3% in (poly) myositis patients</td> </tr> <tr> <td>Ro-52</td> <td>25% in myositis patients Note: Not disease specific and only considered as positive if accompanied by another positive marker.</td> </tr> </tbody> </table>		Antigen	Associated Diseases and Autoantibody Prevalence	Mi-2 α	15-30% in DM patients ; 8-12% in idiopathic myositis patients	Mi-2 β	15-30% in DM patients ; 8-12% in idiopathic myositis patients	TIF1g	15% in DM patients	MDA5	13-26% in DM patients ; 95% in clinically amyopathic DM patients	NXP2	18-25% in juvenile PM/DM patients	SAE1	8% in DM patients	Ku	Myositis associated. 40% in myositis or systemic sclerosis	PM-Sc100	Myositis associated. 50-70% in overlap PM/DM/systemic sclerosis patients	PM-Sc175	Myositis associated. 50-70% in overlap PM/DM/systemic sclerosis patients	Jo-1	25-55% in PM patients	SRP	5% in PM patients	PL-7	3-6% in myositis patients	PL-12	3% in myositis patients	EJ	1-3% in PM patients	OJ	3% in (poly) myositis patients	Ro-52	25% in myositis patients Note: Not disease specific and only considered as positive if accompanied by another positive marker.
Antigen	Associated Diseases and Autoantibody Prevalence																																			
Mi-2 α	15-30% in DM patients ; 8-12% in idiopathic myositis patients																																			
Mi-2 β	15-30% in DM patients ; 8-12% in idiopathic myositis patients																																			
TIF1g	15% in DM patients																																			
MDA5	13-26% in DM patients ; 95% in clinically amyopathic DM patients																																			
NXP2	18-25% in juvenile PM/DM patients																																			
SAE1	8% in DM patients																																			
Ku	Myositis associated. 40% in myositis or systemic sclerosis																																			
PM-Sc100	Myositis associated. 50-70% in overlap PM/DM/systemic sclerosis patients																																			
PM-Sc175	Myositis associated. 50-70% in overlap PM/DM/systemic sclerosis patients																																			
Jo-1	25-55% in PM patients																																			
SRP	5% in PM patients																																			
PL-7	3-6% in myositis patients																																			
PL-12	3% in myositis patients																																			
EJ	1-3% in PM patients																																			
OJ	3% in (poly) myositis patients																																			
Ro-52	25% in myositis patients Note: Not disease specific and only considered as positive if accompanied by another positive marker.																																			

Test Name	Systemic Sclerosis (Nucleoli) profile (IgG) (SSBLOT)																													
Specimen	Blood (red top, 6mL or SSTII gold top, 3.5-5mL)																													
Unacceptable	Haemolysed, Lipemic, Icteric																													
Method	Lineblot Assay (LIA)																													
Performed	Office hours only																													
TAT	10 days																													
Clinical usage	<table border="1"> <thead> <tr> <th>Antigen</th> <th>Autoantibody Prevalence in Systemic Sclerosis (SSc)</th> </tr> </thead> <tbody> <tr> <td>Sc1-70</td> <td>40-78% in SSc (diffuse form) ; 5-15% in SSc (limited form)</td> </tr> <tr> <td>Centromere A</td> <td>5-10% in SSc (diffuse form) ; 80-95% in SSc (limited form)</td> </tr> <tr> <td>Centromere B</td> <td>5-10% in SSc (diffuse form) ; 80-95% in SSc (limited form)</td> </tr> <tr> <td>RP11</td> <td>5-22% in SSc (diffuse form)</td> </tr> <tr> <td>RP155</td> <td>5-22% in SSc (diffuse form)</td> </tr> <tr> <td>Fibrillarin</td> <td>5-10% in SSc (diffuse form)</td> </tr> <tr> <td>NOR90</td> <td>rarely (<5% in SSc)</td> </tr> <tr> <td>Th/To</td> <td>rarely (<5% in SSc)</td> </tr> <tr> <td>PM-Sc100</td> <td>10-20% in SSc</td> </tr> <tr> <td>PM-Sc175</td> <td>10-20% in SSc</td> </tr> <tr> <td>Ku</td> <td>rarely (<5% in SSc)</td> </tr> <tr> <td>PDGFR</td> <td>rarely (<5% in SSc)</td> </tr> <tr> <td>Ro-52</td> <td>Antibodies against Ro-52 are not systemic sclerosis specific but often co-occur with antibodies against SSc specific antigens.</td> </tr> </tbody> </table>		Antigen	Autoantibody Prevalence in Systemic Sclerosis (SSc)	Sc1-70	40-78% in SSc (diffuse form) ; 5-15% in SSc (limited form)	Centromere A	5-10% in SSc (diffuse form) ; 80-95% in SSc (limited form)	Centromere B	5-10% in SSc (diffuse form) ; 80-95% in SSc (limited form)	RP11	5-22% in SSc (diffuse form)	RP155	5-22% in SSc (diffuse form)	Fibrillarin	5-10% in SSc (diffuse form)	NOR90	rarely (<5% in SSc)	Th/To	rarely (<5% in SSc)	PM-Sc100	10-20% in SSc	PM-Sc175	10-20% in SSc	Ku	rarely (<5% in SSc)	PDGFR	rarely (<5% in SSc)	Ro-52	Antibodies against Ro-52 are not systemic sclerosis specific but often co-occur with antibodies against SSc specific antigens.
Antigen	Autoantibody Prevalence in Systemic Sclerosis (SSc)																													
Sc1-70	40-78% in SSc (diffuse form) ; 5-15% in SSc (limited form)																													
Centromere A	5-10% in SSc (diffuse form) ; 80-95% in SSc (limited form)																													
Centromere B	5-10% in SSc (diffuse form) ; 80-95% in SSc (limited form)																													
RP11	5-22% in SSc (diffuse form)																													
RP155	5-22% in SSc (diffuse form)																													
Fibrillarin	5-10% in SSc (diffuse form)																													
NOR90	rarely (<5% in SSc)																													
Th/To	rarely (<5% in SSc)																													
PM-Sc100	10-20% in SSc																													
PM-Sc175	10-20% in SSc																													
Ku	rarely (<5% in SSc)																													
PDGFR	rarely (<5% in SSc)																													
Ro-52	Antibodies against Ro-52 are not systemic sclerosis specific but often co-occur with antibodies against SSc specific antigens.																													

Test Name	Neuronal Antigens Profile PLUS RST (IgG) (NEUROBLOT)																															
Specimen	Blood (red top, 6mL or SSTII gold top, 3.5-5mL)																															
Unacceptable	Haemolysed, Lipemic, Icteric																															
Method	Lineblot Assay (LIA)																															
Performed	Office hours only																															
TAT	10 days																															
Clinical usage	<table border="1"> <thead> <tr> <th>Antigen</th> <th>Associated Diseases</th> <th>Associated Tumors</th> </tr> </thead> <tbody> <tr> <td>Amphiphysin</td> <td>Stiff-person syndrome</td> <td>Breast carcinoma; small-cell lung carcinoma</td> </tr> <tr> <td>CV2</td> <td>Limbic encephalitis</td> <td>Small-cell lung carcinoma; thymoma</td> </tr> <tr> <td>PNMA2 (Ma2/Ta)</td> <td>Rhombencephalitis; paraneoplastic limbic encephalitis; brain stem encephalopathy</td> <td>Germinal carcinoma of the testis (seminoma)</td> </tr> <tr> <td>Ri</td> <td>Paraneoplastic opsoclonus myoclonus ataxia</td> <td>Small-cell lung carcinoma; breast carcinoma</td> </tr> <tr> <td>Yo</td> <td>Paraneoplastic cerebellar degeneration</td> <td>Ovarian, breast, uterine carcinoma</td> </tr> <tr> <td>Hu</td> <td>Encephalitides with focus in brain stem, cerebellum and limbic system; myelitis; polyneuropathy (autonomous, sensory, sensory-motor)</td> <td>Small-cell lung carcinoma; neuroblastoma</td> </tr> <tr> <td>Recoverin</td> <td>Retinopathy</td> <td>Small-cell lung carcinoma</td> </tr> <tr> <td>SOX1</td> <td>Lambert-Eaton myasthenic syndrome</td> <td>Small-cell lung carcinoma</td> </tr> <tr> <td>Titin</td> <td>Myasthenia gravis</td> <td>Thymoma</td> </tr> </tbody> </table>		Antigen	Associated Diseases	Associated Tumors	Amphiphysin	Stiff-person syndrome	Breast carcinoma; small-cell lung carcinoma	CV2	Limbic encephalitis	Small-cell lung carcinoma; thymoma	PNMA2 (Ma2/Ta)	Rhombencephalitis; paraneoplastic limbic encephalitis; brain stem encephalopathy	Germinal carcinoma of the testis (seminoma)	Ri	Paraneoplastic opsoclonus myoclonus ataxia	Small-cell lung carcinoma; breast carcinoma	Yo	Paraneoplastic cerebellar degeneration	Ovarian, breast, uterine carcinoma	Hu	Encephalitides with focus in brain stem, cerebellum and limbic system; myelitis; polyneuropathy (autonomous, sensory, sensory-motor)	Small-cell lung carcinoma; neuroblastoma	Recoverin	Retinopathy	Small-cell lung carcinoma	SOX1	Lambert-Eaton myasthenic syndrome	Small-cell lung carcinoma	Titin	Myasthenia gravis	Thymoma
Antigen	Associated Diseases	Associated Tumors																														
Amphiphysin	Stiff-person syndrome	Breast carcinoma; small-cell lung carcinoma																														
CV2	Limbic encephalitis	Small-cell lung carcinoma; thymoma																														
PNMA2 (Ma2/Ta)	Rhombencephalitis; paraneoplastic limbic encephalitis; brain stem encephalopathy	Germinal carcinoma of the testis (seminoma)																														
Ri	Paraneoplastic opsoclonus myoclonus ataxia	Small-cell lung carcinoma; breast carcinoma																														
Yo	Paraneoplastic cerebellar degeneration	Ovarian, breast, uterine carcinoma																														
Hu	Encephalitides with focus in brain stem, cerebellum and limbic system; myelitis; polyneuropathy (autonomous, sensory, sensory-motor)	Small-cell lung carcinoma; neuroblastoma																														
Recoverin	Retinopathy	Small-cell lung carcinoma																														
SOX1	Lambert-Eaton myasthenic syndrome	Small-cell lung carcinoma																														
Titin	Myasthenia gravis	Thymoma																														

Test Name	Anti-Phospholipase A2 Receptor IgG (Anti-PLA2R)
Specimen	Blood (red top, 6mL or SSTII gold top, 3.5-5mL)
Unacceptable	Haemolysed, Lipemic, Icteric
Method	Enzyme linked immunosorbent assay ELISA
Performed	Office hours only
TAT	20 days
Clinical usage	Useful in the diagnosis of primary membranous glomerulonephritis (MGN, pMGN)

Test Name	Anti-Tissue Transglutaminase IgG (Anti-TTG)
Specimen	Blood (red top, 6mL or SSTII gold top, 3.5-5mL)
Unacceptable	Haemolysed, Lipemic, Icteric
Method	Enzyme linked immunosorbent assay ELISA
Performed	Office hours only
TAT	40 days
Clinical usage	Useful in the diagnosis of gluten-sensitive enteropathy (coeliac disease) and Dermatitis herpetiformis Duhring.

Test Name	Anti-Tissue Transglutaminase IgA (Anti-TTA)
Specimen	Blood (red top, 6mL or SSTII gold top, 3.5-5mL)
Unacceptable	Haemolysed, Lipemic, Icteric
Method	Enzyme linked immunosorbent assay ELISA
Performed	Office hours only
TAT	40 days
Clinical usage	Useful in the diagnosis of gluten-sensitive enteropathy (coeliac disease) and Dermatitis herpetiformis Duhring.

Test Name	Anti-Glutamic Acid Decarboxylase IgG (Anti-GAD)
Specimen	Blood (red top, 6mL or SSTII gold top, 3.5-5mL)
Unacceptable	Haemolysed, Lipemic, Icteric
Method	Enzyme linked immunosorbent assay ELISA
Performed	Office hours only
TAT	20 days
Clinical usage	Useful in the diagnosis of type 1 diabetes mellitus (insulin-dependent diabetes mellitus, IDDM).

Test Name	Anti-Insulinoma Antigen 2 IgG (Anti-IA2)
Specimen	Blood (red top, 6mL or SSTII gold top, 3.5-5mL)
Unacceptable	Haemolysed, Lipemic, Icteric
Method	Enzyme linked immunosorbent assay ELISA
Performed	Office hours only
TAT	20 days
Clinical usage	Useful in the diagnosis of type 1 diabetes mellitus (insulin-dependent diabetes mellitus, IDDM).